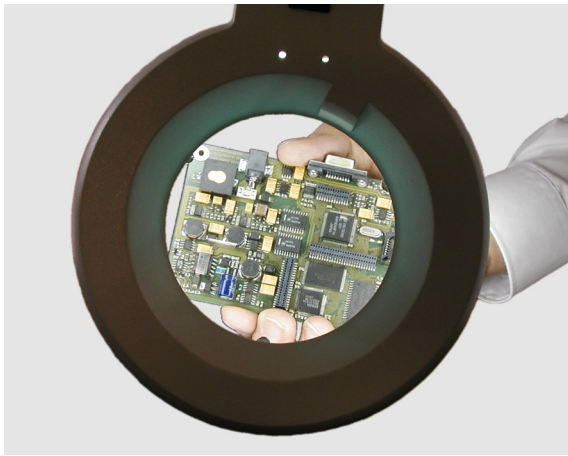


Development Services for Display Projects



Having long-term experience in developing high-quality hardware and software solutions for embedded systems, Simplify Technologies specialises in solutions with graphical displays. By developing display products for industrial applications, we can provide services which benefit from this specialised knowledge. This means that the wheel does not need to be reinvented for such projects which results in a significant acceleration of your display projects and in economical improvements as well.

Development services for projects with graphical displays:

- Development and adaption of hardware components, e.g.:
 - Selection of components and system architecture
 - Interfacing of touch glasses
 - Interfacing of LCD displays and LCD controllers
- Software oriented Services:
 - Development of LCD drivers for your specific hardware
 - Development of custom specified graphical functions and applications frameworks.

- We also provide consulting before the project starts or realise a complete solution in hardware and software according to your specifications.

Special services for accelerating your display project:

Often during development in progress additional difficulties are encountered which threaten to delay the project. Due to our experience, in most cases here we can offer fix-priced services, especially at the start of a project, when there is the need to establish the basic functionality of the display and a touch screen. These services are typically provided at the customer's site:

- Bringing the system to basic functionality up to the point where application programming can be started can be achieved with our GUI library within a day, provided that the LCD controller used is supported, the hardware itself is functional and a suitable C compiler is available.
- Bug-hunting for hardware (e. g. if artefacts are visible on the display) and software in the context of display control or for the development tools used are offered on a time-basis.
- Additional Services can also be provided, e. g. for an arbitrary LCD controller without GUI library support the system can also be brought to a state of basic display functionality.

